



Diana Burbridge holds the presentation Bible she asked the Greater Blessings committee to autograph for her upon completion of the wiring project in her home. Pictured is Diana, Ellie Arguimbau, Judy Blalack, Lanora Helbig, and Duane Little. The Bible was donated by John & Ariel Sandford at CREATE. *Photo by R'Gean Lillibridge*



Marilyn White and Kathy McPherson answer questions about the Fuller Center programs at 2013 EXPO. *Marilyn's photos*

**EXPO 2013**

Marilyn White, Chris Rust, Kathy McPherson, and Tracie Martinsen greeted persons who visited the SV Fuller Center for Housing booth at the EXPO event April 13. Norma Seaton, past President, picked up an application for a home for a friend. Tracie had placed a notice on Facebook about helping with applications during EXPO which generated some interest. They also had an inquiry about our Greater Blessings program where we help homeowners with home repair.

\*\*\*\*\*



Colleen Rosson and Mike Humphrey stand next to the new Historic Silver Valley Chamber of Commerce logo during the 3rd Thursday Business After Hours held at the Chamber office in Kellogg. Mike, Marilyn White, and Judy Blalack attended representing the Fuller Center. We signed up to host this event at the ReUse Store from 4-6 PM on July 18<sup>th</sup>. *Photo by Judy*



This is the 1981 Mercury Grand Marquis donated to us from the Norma McGatlin estate. Norma kept it in her garage and only drove it about 60,000 miles. We will be auctioning it August 3rd during Pinehurst Days. In the meantime, we will show it at events in the Silver Valley.

**You can see it on display during Wallace's Depot Days, May 12.**

**For more information about Depot Days and registration to enter your car, go to [www.npdepot-days.php](http://www.npdepot-days.php) Registration costs \$15**

Lots of activities, booths, meals, etc. Wallace knows how to throw a party!

*Bear ye one another's burdens, and so fulfil the law of Christ.*

**Galatians 6:2**

- ❖ Clint Kunze of Shoshone Base Camp is working with us for home repair projects. Give him a call at 682-2267 or Judy at 682-3240.

## Remodeling at the ReUse Store



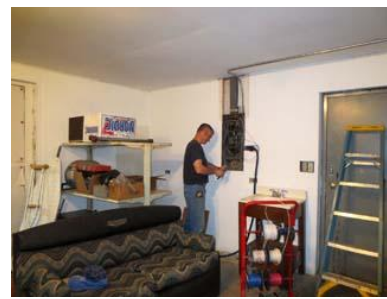
There is a new look to the ReUse Store with thermo pane windows replacing the large single pane windows and a double door for easy access on the west side of the building. A handicap ramp was installed during the revamping of the front steps.



Visiting friends from South Idaho, Nyle & Joan Garn, offer suggestions to Kevin & Verne on remodeling the steps outside the new doors. *Photo by Judy*



After Kevin constructs the ramp, Verne requests that he prove a wheelchair can negotiate it. We do have wheelchairs and hospital beds for sale in the store. *Photo by Verne*



to the breaker box.

During the front remodeling project, the interior wiring needed replacing. We hired North Side Electric & Supply to bring it up to code. Above is Josh Hemphill attaching new wires

*Photos by Judy*

Another professional, Jeff Crawford, of Systems Design, was hired to install natural gas inside the ReUse Store. Now donated used gas appliances can be tested before reselling them.



## Shirt Logos


Help defray the cost of the **Ride the Wall** shirts by placing your logo on the shirt backs. The logos will be ironed on by Sunnyside Drug. Costs depend on colors:  
 \$200 or more = 3 x 4 inch logo; \$100 = 2½ x 2½ inch logo  
 \$50 = Business name only printed along bottom of shirt.

For \$1000 they would do a nice big logo.

**We will need to receive your check by June 10<sup>th</sup> to get them ready for printing.** Since we keep the money generated for this joint fund-raiser with Rose Lake Quick Response Unit in a separate account in a separate bank from our Fuller Center working accounts, ***please send a note that this is for the Bike shirt logo.*** Checks can be made out to SVFCH and mailed to PO Box 338, Smelterville, ID 83868.

*We thank these businesses for supporting our newsletter.*

**The Mouse Pad**



**COMPUTERS**  
 Sales & Service  
 Updates / Repairs  
 Virus Protection

**Rick Fuller**  
 Owner

**208-682-3669**  
 903 N. Division, #8  
 Pinehurst, Idaho 83850  
[www.tmpcs.com](http://www.tmpcs.com)

A+, N+, Microsoft Certified  
 HP Authorized Reseller, AMD Partner  
 Linksys Networking Partner

Buy 1 dinner-get 2nd half off



Summer Hours  
 10 to 10  
 every day

**Casade Oro**

**Mexican Family Restaurant**  
 Jesus Beltran, Manager  
 Marco & Karla Rojo

210 W. Cameron  
 Kellogg, ID 83837

Tel: (208) 784-1360  
 Fax: (208) 783-2303

**DAN'S  
 HEADHUNTER  
 TAXIDERMY**



Bear Skin Rugs • Deer Head Mounts  
 Elk Head Mounts

24537 E. Canyon Rd., Cataldo, ID 83810 (208) 682-4453  
[www.headhuntertaxidermy.com](http://www.headhuntertaxidermy.com)

*First American  
 Title Company*



SHIRLEY GEORGE  
 VP/MANAGER

111 MAIN STREET • KELLOGG, IDAHO 83837  
 LOCAL 208-783-2546 • FAX 208-783-2799  
 CELL 208-660-4848  
 EMAIL [sgeorge@firstamholding.com](mailto:sgeorge@firstamholding.com)  
[www.firstamholding.com](http://www.firstamholding.com)

*"We examine more than your vision"*

**KELLOGG VISION CENTER**



**BRIAN R. MILLER, O.D.**  
 403 Bunker Avenue  
 Kellogg, ID 83837  
 (208) 784-1141

752-1178




Main St.  
 Osburn




*All Trucks Radio Dispatched For Quick, Friendly Service*  
 \* Pre Mix \* Pre Cast Products \* Crushed Rock  
 \* Sand & Gravel \* Trucking \* Excavation

**F & H Mine Supply, Inc.**  
 P. O. Box 747  
 Wallace, Idaho 83873  
 Forest Van Dorn  
[forest@fhrmine.com](mailto:forest@fhrmine.com)

**MAIN WAREHOUSE:**  
 1016 E. Mullan Ave.  
 Osburn, Idaho 83849  
 Phone (208) 752-1294 • Fax (208) 753-1431  
[sales@fhrmine.com](mailto:sales@fhrmine.com)



**SILVER VALLEY  
 TIRE CENTER**  
 407 W. Cameron Ave.  
 Kellogg, Idaho 83837  
 (208) 784-1181

TIRES — MUFFLERS  
 BRAKES — TAIL PIPES

**FRANK SEATZ**  
 Home (208) 753-9853

**Gayton Fine Landscape**  
**Ralph Gayton**  
 (208) 682-2288 • Cell (208) 659-8248

Water Features • Sprinkler Systems  
 Retaining Walls • Outdoor Lighting • Grading Specialist  
 Sod/Hydroseeding • Placing Rocks • Dry Creeks & River Beds

*Nicely Done... Quality Done*



**Yoke's  
 FRESH  
 MARKET**

Pharmacy

Kellogg #5  
 117 N. Hill Street  
 Kellogg, ID 83837  
 Phone (208) 783-0920  
 Fax (208) 783-0912  
[krx@yokesfoods.com](mailto:krx@yokesfoods.com)

Toll Free 866-804-4462



**Thank you,  
April Donors**  
**Your help is like the bright rays  
during the wet days of April.**

Anonymous, George & Melody Blalack, Ron & Ladonna Boothe, James Calkins, Barbara & Gordon Canterbury, Marie Carver, Barbara Elfsten, Tom & Connie Fudge, Paul Geisler & Marquita McIntire, Nancy Hardy, Inland NW Combined Federal Campaign, Tom & Michelle Kilbourne, Jacques & Jan Lemieux, Daniel McGee, Patricia Minar, Herbert & June Quade, Jim & Norma Seaton, Gary Stanley, Stovern Supply Co., Bob & Dana Stovern, Lois White, Marilyn White, Winnie Williams, Mary Woolum, Necia Wright, Ed Wilson, Harold Whiteside, Katie Humphries, Jack Rupp, Lois Arvidson, Henrick Iaskson, Ellen Arguimbau, Marilyn Hagerman, Judi & Bob LaBau, Bev Roberts, Panhandle State Bank, Rebecca Wissenbach, Hecla Mining Co., Flame Heating, Bob Skilton, Gene Fulton, Shoshone Glass, Wallace Depot Days Committee

**Coming Events**

May 12—Depot Days, Wallace~~see our car there  
 May 14—Board and Committee Meetings, 7:30 PM,  
 Mountain View Congregational Church,  
 Kellogg  
 Jun 21—16<sup>th</sup> Annual “Ride the Wall”, registration from  
 4-6 PM, Mission Inn, Cataldo  
 Jun 29—21<sup>st</sup> Annual Pig Roast, 4-7 PM, Kellogg City Park



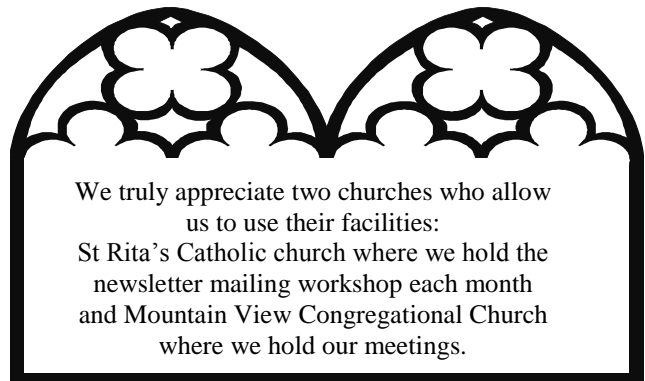
Penny Michael brought her granddaughters, Kenadie and Abby Arthur to help with the newsletter mailing. Kenadie is earning volunteer points needed to apply for scholarships.  
*Photo by Judy*

**We are honored to receive these memorials.**

- From Glenn & Marbie Higbee  
In Memory of Arlan Brandt*
- From Roger & Marilyn Mangum  
In Memory of Merv Hill,  
and of Al Kohal*
- From Susan Bourne  
In Memory of Don Bjirke*
- From Kenneth & Carolyn Kimpton  
In Memory of Earl & Evelyn Kimpton*
- From Darrell & Joann Carlson  
In Memory of Jim Baker*
- From Verne & Judy Blalack  
In Memory of Brenda Seaton*

**Greater Blessings Donations**

Diana Burbridge, Darrell & Joann Carlson, Judy & Verne Blalack, Anonymous, Vida Taylor, and Shannan Souza



We truly appreciate two churches who allow us to use their facilities:  
 St Rita’s Catholic church where we hold the newsletter mailing workshop each month and Mountain View Congregational Church where we hold our meetings.

**Here's Help for SVFCH . . .**

- ❖ I’d like to join the “300 Club” and pledge at least \$10 per month for one year. Please note 300 on your check.
- ❖ Here is my pledge for \$ \_\_\_\_\_ per month for one year.
- ❖ Here is my gift of \$ \_\_\_\_\_.
- ❖ I have a house and/or land to donate.
- ❖ I can make a no-interest loan for \$ \_\_\_\_\_. Please call about working out the details.
- ❖ I can provide construction materials either discounted or at no cost.
- ❖ I would like to help with construction and/or committee work. Please call me to help or send a volunteer form.

I do not wish to be on your mailing list.  
 I do not wish a receipt or thank-you.

Name \_\_\_\_\_ Phone \_\_\_\_\_

Address \_\_\_\_\_

City \_\_\_\_\_ State \_\_\_\_\_ Zip \_\_\_\_\_

**Please return to Silver Valley Fuller Center for Housing, Inc. ☐☐P.O. Box 338, Smelterville, ID 83868☐☐786-6013**



Josh Haralson finishes the 2<sup>nd</sup> phase of wiring for the Burbridge Greater Blessings Project. *Photo by Lanora Helbig*



Robbie Smith, an excellent helper, turns his hands to several jobs in the ReUse Store including cleaning up after construction in the front of the store. *Photo by Judy*



Norma Seaton, former Fuller Center Partnership Chair, stops to visit with Marilyn White at EXPO 2013. *Marilyn White's photo*



## WISH LIST

**Fund Raising Co Chair & PR Co Chair  
New Homeowner Applicants**—Call

Marilyn at 753-4131 or go online [www.svfch.org](http://www.svfch.org) for information and applications.

**ReUse Store Volunteers and Construction Volunteers**  
for Greater Blessings repair projects

**Applications for home repair** are available online at [www.svfch.org](http://www.svfch.org) or call Judy at 682-3240 or stop in at the ReUse Store.

**We are accepting bids on the 14 feet by 64 feet Office Trailer** being donated to us by Panhandle State Bank. It is assessed at \$16,000. It will not be available until mid July. Please mail your bid to our office, SVFCH, Box 338, Smeltonville, 83868

**PLEASE COME TO SEE US AT DEPOT DAYS, MAY 11.**

The printing of this newsletter is courtesy of **ABC Business Equipment**  
**1-208-786-1041**  
and  
**Supporters Like You**